



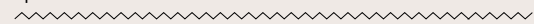


SMILE

design ridea



Giocosso, ironico e funzionale, dalle forme morbide a dalle linee sapientemente raccordate, questo prodotto è per chi va oltre la funzione pratica, per chi ama il design nella sua quotidianità.








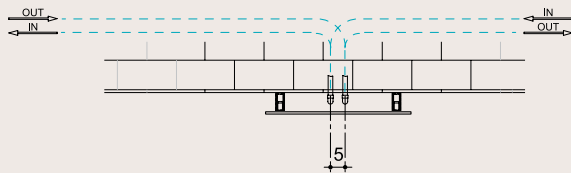
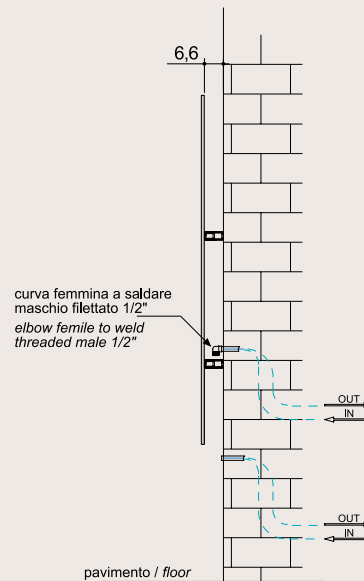
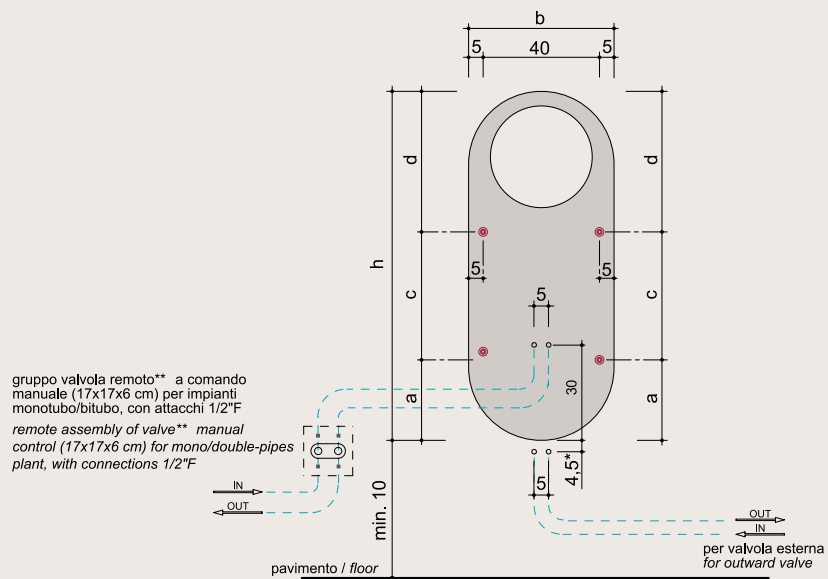
Joyful, ironic and functional, with its soft shape and masterfully linked lines, this product goes beyond a purely functional purpose, for those who seek beauty in their daily life.

*Finitura fotografata in queste
pagine: Bismuth MX302L.*

*Finish photographed on these
pages: Bismuth MX302L.*

SMILE

hxb (cm)	n numero elementi/ elements number	peso a vuoto / weight empty (kg)	volume d'acqua / water volume (dm ³)	a (cm)	c (cm)	d (cm)	e (cm)	Qs resa termica / thermal yield □t 50°C (watt)	Q potenza elettrica / electrical power (watt)	versione mista / combined version	fissa / not opening	apribile / opening
												
verticale/vertical												
120,0x50,0	1	11,0	0,16	27,7	44,0	48,3	-	410	-	-	•	-
150,0x50,0	1	15,0	0,25	43,0	64,0	43,0	-	560	-	-	•	-



*.
utilizzando valvole Ridea
**.

la valvola a incasso può essere
posizionata anche distante dal
radiatore; l'importante è che sia
posizionata più bassa rispetto
all'entrata dell'acqua nel
radiatore. I 4 raccordi 1/2\"/>

forniti di serie.

*.
using Ridea valves
**.

built-in valve can also be placed
away from the radiator; the
important thing is that it is
positioned lower than the entry
of water into the radiator. The 4
fitting 1/2\"/>

standard.